

Santa Clara Valley Urban Forestry Alliance Fall Meeting



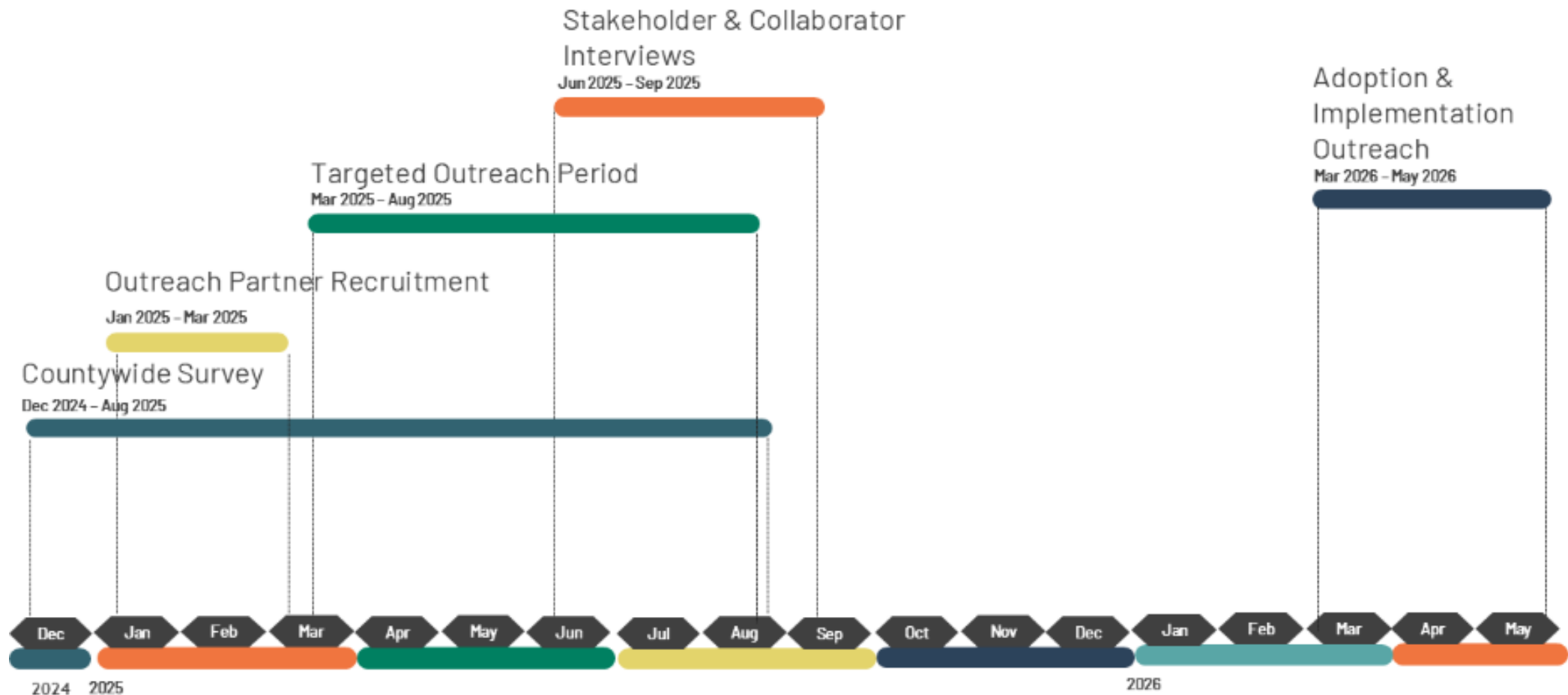
Santa Clara County
Climate Collaborative

Welcome and Agenda

1. Office of Sustainability Staffing Updates
2. Urban Forestry Master Plan Updates –
 1. Outreach Plan Review
 2. Best Practices Working Group
 3. Community Profiles Review
3. Strategic Planning of SCVUFA
4. Next Steps



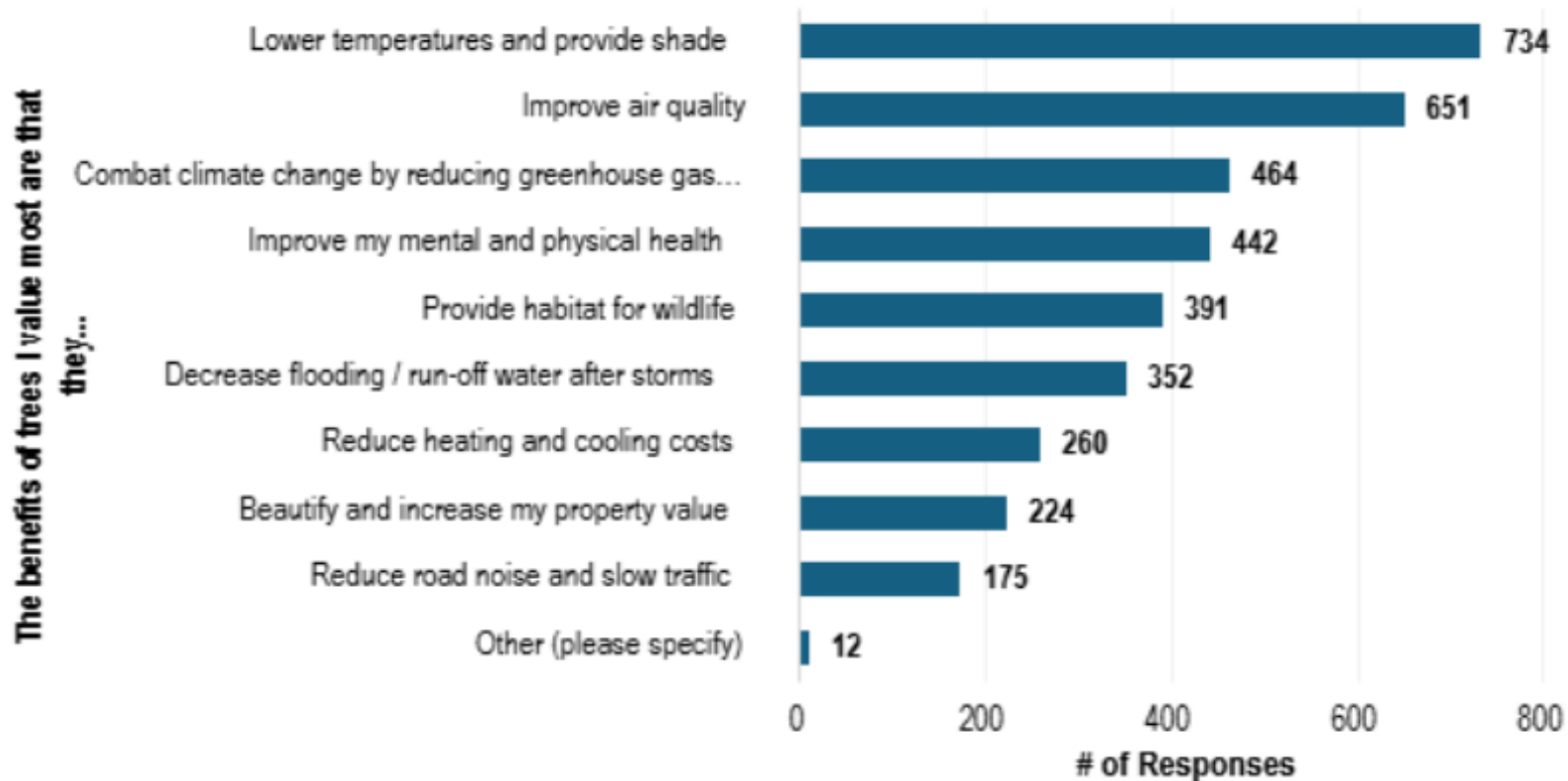
UFMP Outreach Plan



Regionwide Survey Results

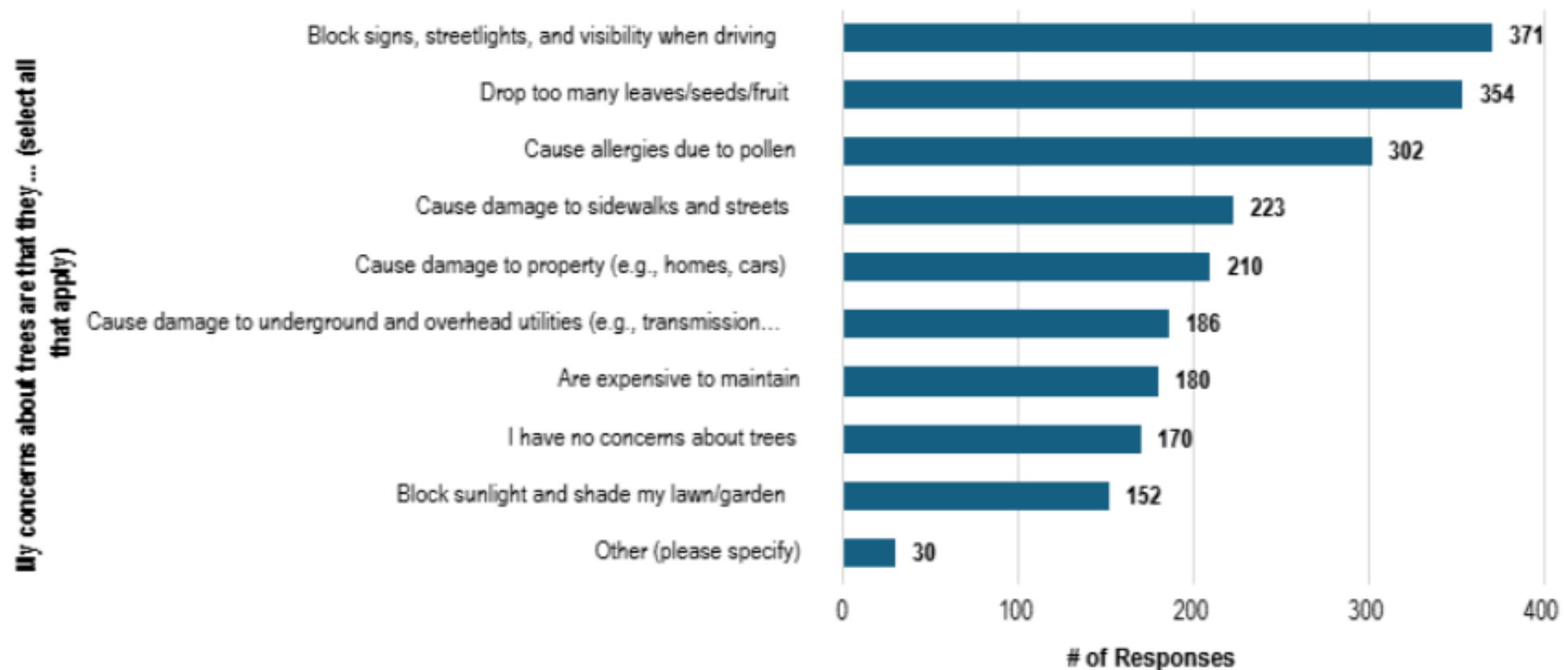
The survey collected input on topics such as:

- Perceptions of the urban forest and its role in community wellbeing
- Concerns about tree maintenance, safety, and water use
- Equity in tree distribution and neighborhood shade coverage
- Priorities for future planting and species selection under changing climate conditions



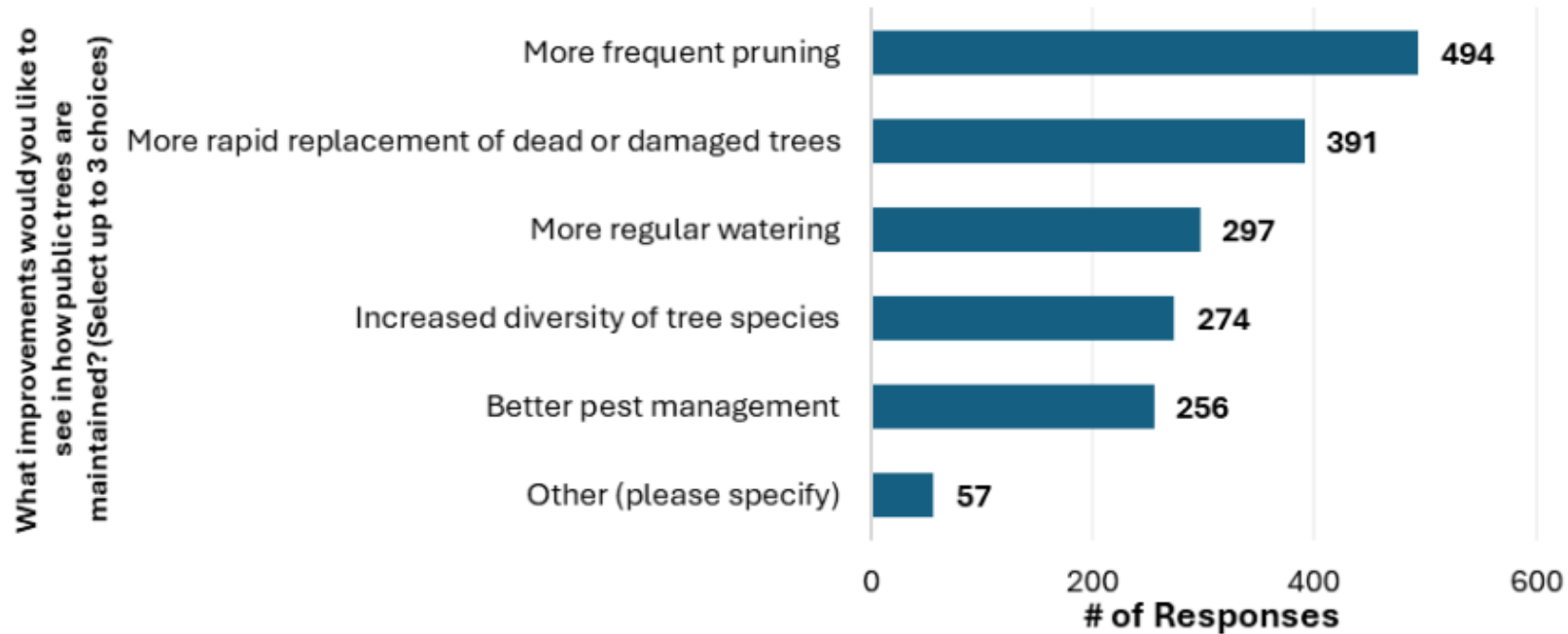
Regionwide Survey Results

Residents appreciate the benefits; however, many expressed concerns related to maintenance and safety.



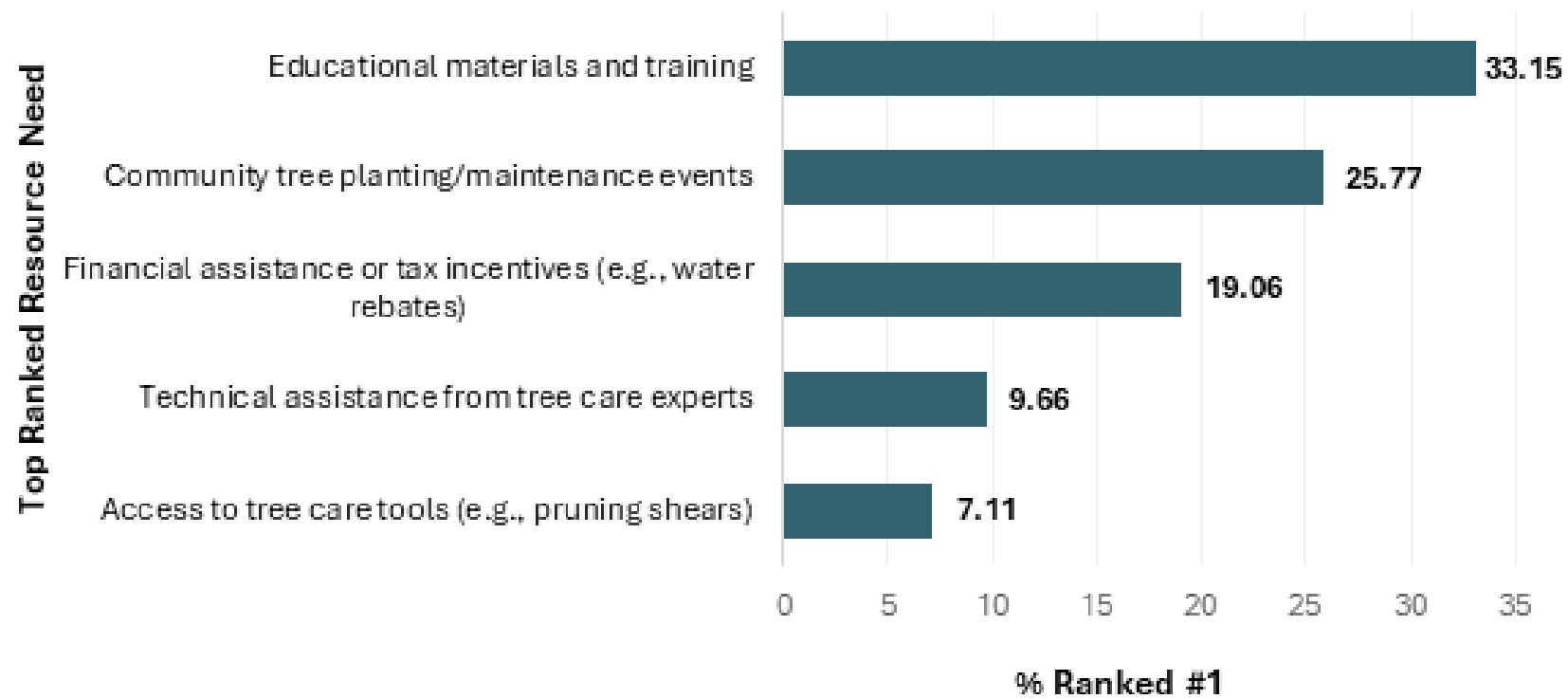
Regionwide Survey Results

What improvements would you like to see in how public trees are maintained?



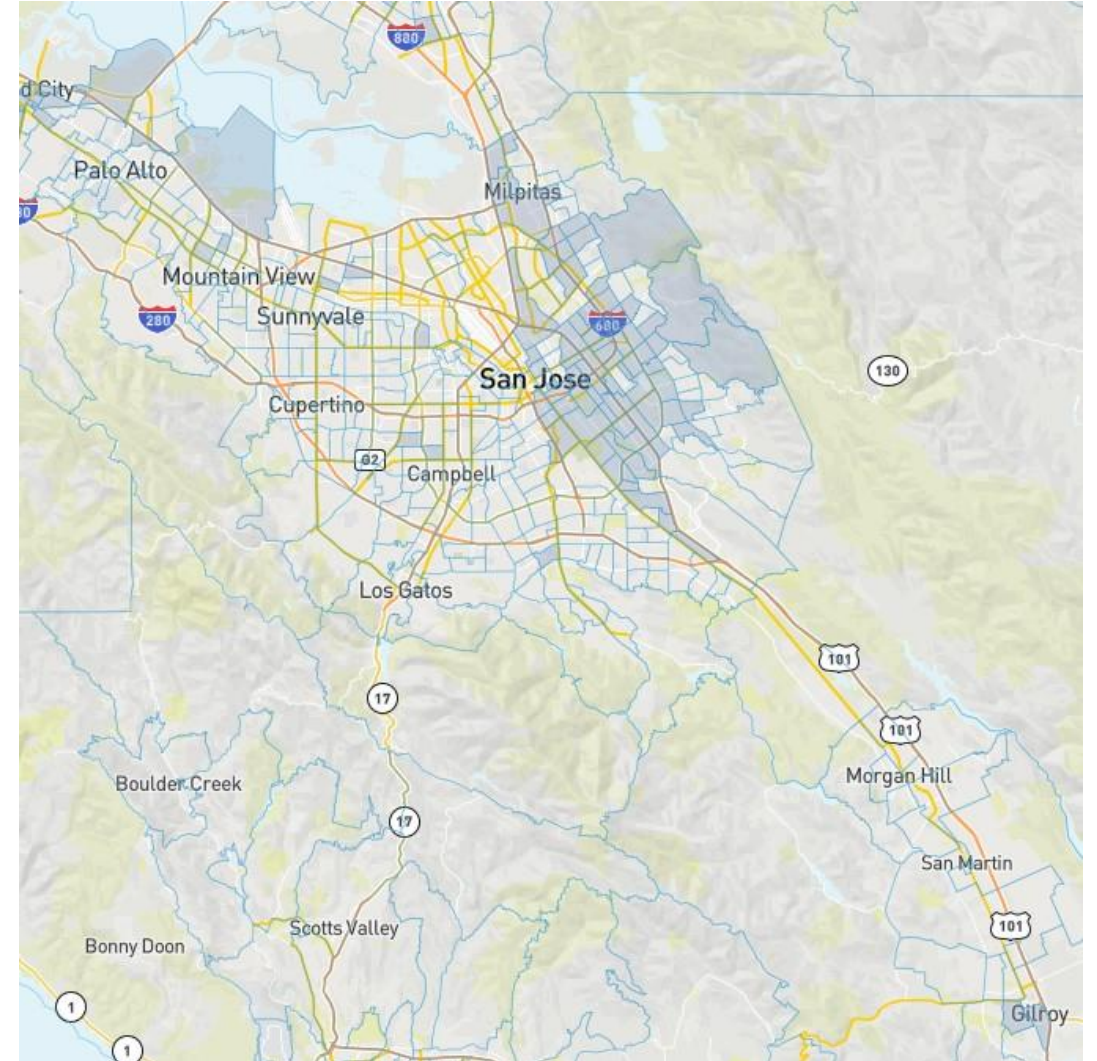
Regionwide Survey Results

What resources/strategies would help you to maintain trees in your community?



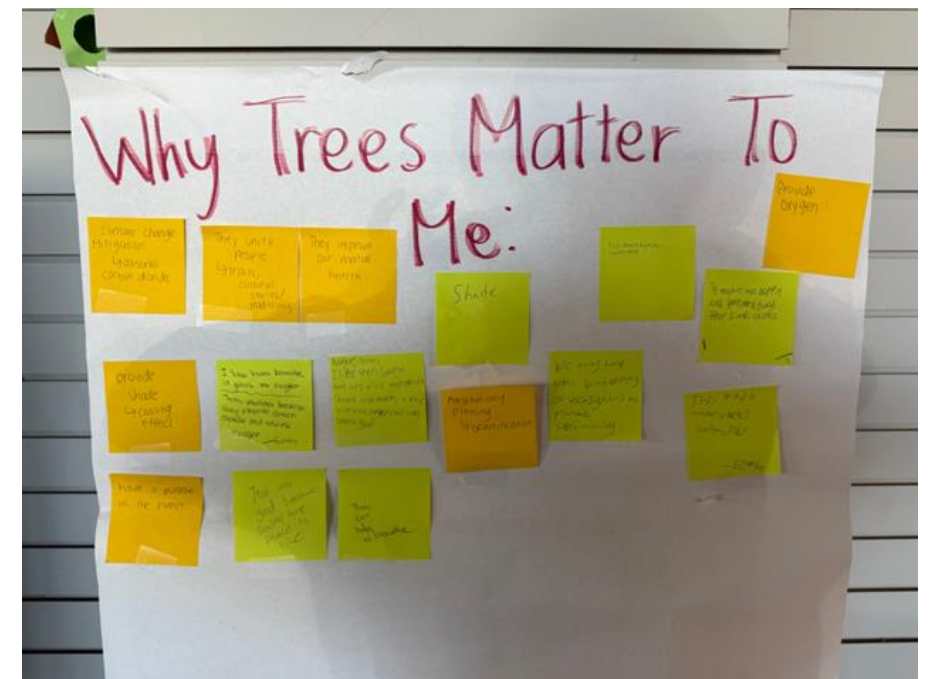
Targeted Outreach

- Identify communities to engage
 - Partnered with six community-based organizations to support outreach
 - Our City Forest
 - Canopy
 - VIVO
 - Community Agency for Resources, Advocacy and Services (CARAS)
 - Lone Bluff - Senter Neighborhood Association
 - META
 - Each organization is engaging directly with designated disadvantaged communities (DACs)



Community Outreach Event Summary

Community Event	Listening Session	Workshop	Business Outreach	Tabling
2	2	8	1	11



Stakeholder Engagement

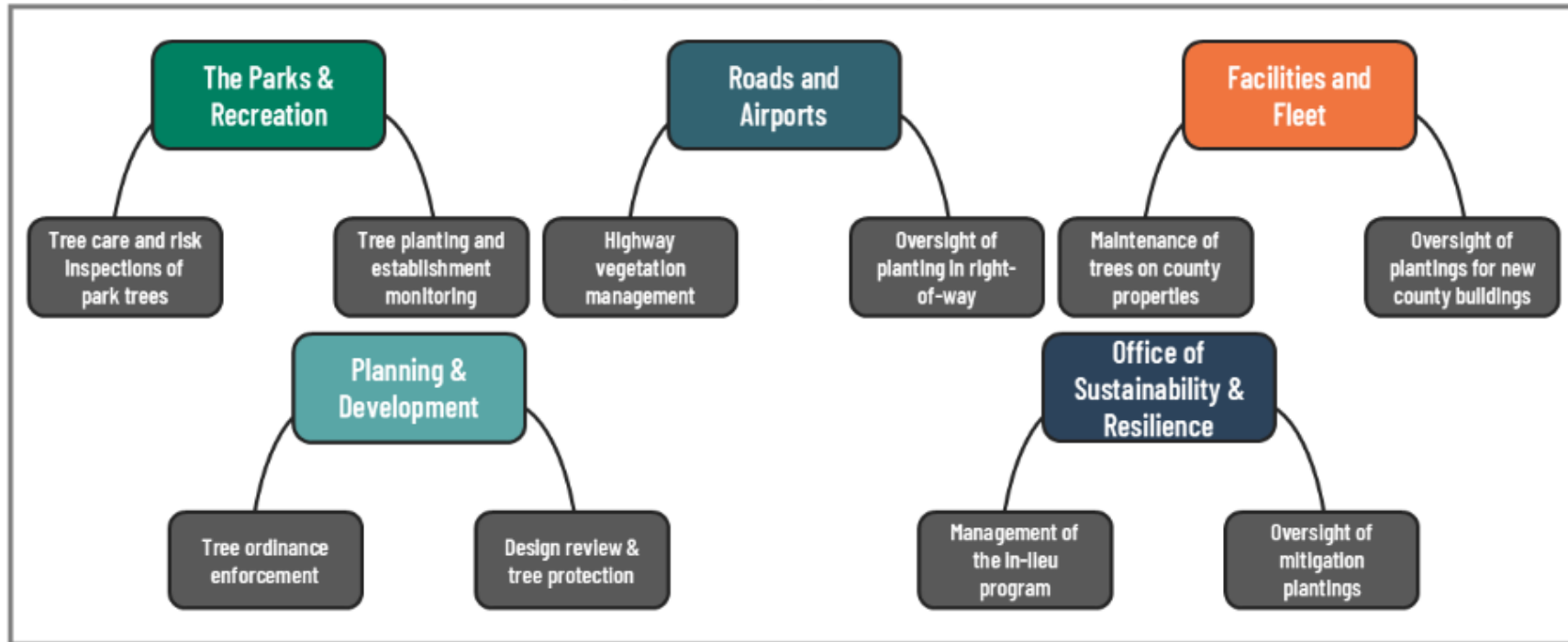


Opportunities identified:

- Develop stable, long-term funding models.
- Target low-canopy, high-need communities for canopy expansion.
- Provide educational materials and outreach taskforces to raise awareness.
- Strengthen partnerships with key community organizations.
- Offer technical training for planting and maintenance at community events.
- Replicate inclusive engagement practices that foster trust and participation.

Operational Gap Analysis

County Forestry Operations



City of Santa Clara

Total Tree Canopy: 15.51%

Non-Disadvantaged Communities (NDAC): 15.43% canopy, 12.96% plantable

Disadvantaged Communities (DAC): 18.74% canopy, 11.16% plantable

Current Canopy Conditions

Santa Clara’s total canopy coverage of 15.51 percent is modest compared to other cities in the county, but canopy distribution across neighborhoods is relatively balanced. DAC tracts show slightly higher canopy coverage at 18.74 percent compared to 15.43 percent in NDACs, indicating that previous planting and preservation work has helped support more equitable tree distribution. However, plantable space is limited citywide, with 12.96 percent available in NDACs and 11.16 percent in DACs. This restricted planting capacity highlights the need for thoughtful, strategic infill rather than large-scale planting, paired with consistent investment in tree maintenance and replacement.

Goals and Objectives

Santa Clara should aim to gradually increase its total canopy coverage to over 22 percent while maintaining the equitable distribution that currently exists between DAC and NDAC tracts. Objectives include protecting and maintaining healthy existing trees, targeting infill planting along streets and public spaces, and ensuring that new development and infrastructure projects incorporate canopy into their design. The city should also continue improving establishment care and long-term maintenance programs to support canopy growth and resilience under changing climate conditions.

Recommended Strategies

Santa Clara can advance steady canopy growth by coordinating planting efforts, prioritizing long-term maintenance, and integrating tree goals into ongoing city investments.

Strategy 1: Embed tree planting into capital improvement projects, streetscape redesigns, and redevelopment efforts to maximize every feasible opportunity for new canopy.

Strategy 2: Maintain mature trees through regular pruning, watering, and inspection to extend lifespan, reduce risk, and prevent canopy decline over time.

Strategy 3: Replace aging or declining trees with climate-resilient species that can withstand local conditions and support long-term canopy stability.

Strategy 4: Pair strategic planting with proactive maintenance to enable incremental canopy growth and support progress toward a citywide coverage level above 22 percent while maintaining equitable distribution across neighborhoods.

Community Profiles

1. Does the outline of the community profiles work for you?
2. Is there anything you’d like to see included or removed?
3. Other thoughts/comments?

Future of SCVUFA



Next Steps

- BMP Symposium Update
 - BMP materials will be provided
 - In the future, host workshops and trainings
- UFMP plan review
 - Mid-January
 - About 3 weeks for review

Questions? Comments?



THANK YOU!



Visit the Office of Sustainability at
www.sustainability.sccgov.org

Contact Us at
sustainability@ceo.sccgov.org