

# Santa Clara County Climate Collaborative

## Introducing: the Resilience Hub Work Group (RHWG)

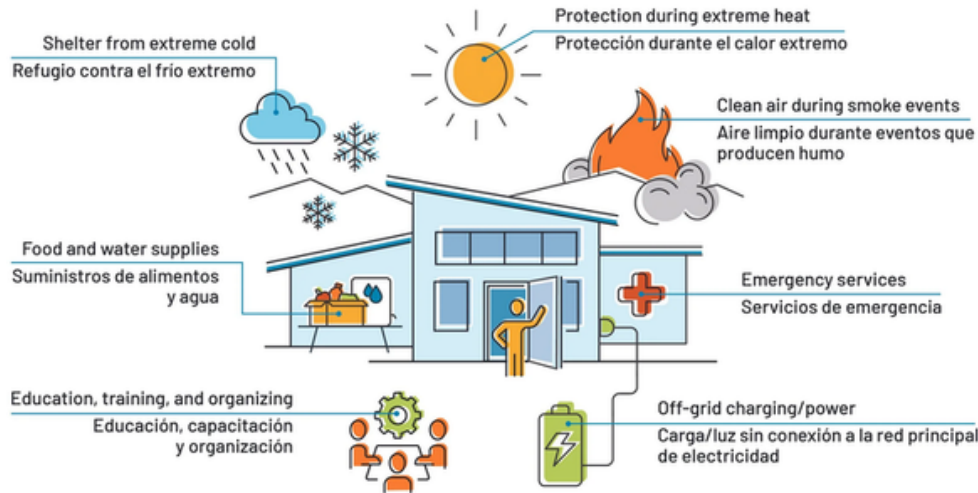
### WHAT IS RESILIENCE?

The ability to prepare for, adapt to, and recover from challenges — whether they're climate-driven, social, or economic.

### WHAT IS A RESILIENCE HUB?

Trusted, community-serving facilities that support residents before, during, and after emergencies while building everyday resilience year-round.

They can take many forms: community centers, schools, libraries, faith-based spaces, nonprofits, or even networks of smaller sites.



### Examples of Resilience Hubs

- **Full-Service Hub:** Centralized facility offering multiple resources
- **Decentralized Network:** A set of smaller “spokes” connected by shared communication and coordination
- **Pop-up/Seasonal Models:** Activated during events or extreme heat.

### Model for Resilience Hubs

Community-Led Facility | Local Institutional Support



### How the RHWG Will work

- **Steering Committee Meetings** (Quarterly, in-person)
  - For active partners directly planning or implementing hubs
  - Provides alignment, coordination, and site-focused collaboration
- **Ad-hoc meetings** for specific grants or sites (in person or virtual)
- **Community Sessions** (Semiannual, in-person)
  - Open to all interested orgs and agencies
  - Focused on peer learning, new opportunities, and networking



Santa Clara County  
Climate Collaborative



Interested? contact Victorina Arvelo  
varvelo@greenbelt.org

# Santa Clara County Climate Collaborative

## Introducing: the Resilience Hub Work Group (RHWG)

### The Resilience Hubs Work Group will:

- Convene local & regional partners, including community-based organizations, nonprofits, agencies, cities, and others across Santa Clara County, who are advancing resilience hub strategies to coordinate and align efforts. Prioritize local, place-based organizations to lead development and leadership of hubs within their communities.
- Share best practices and resources including community engagement, co-location strategies, and long-term operations from early work in ESJ and Gilroy and from PHD led Resilience Hubs in Mountain View, Sunnyvale, ESJ, and Gilroy.
- Identify and pursue co-funding opportunities, including partnerships on grants and leveraging the Resilience Fund, to support the planning, development, and long-term sustainability of the resilience hubs work group in the region.
- Inform and align with broader Collaborative objectives and County values and policy priorities relating to equitable climate resilience and community-driven planning.

### Work Group Activities

- Establishing a common language and shared definitions around what constitutes a resilience hub in Santa Clara County, ensuring alignment across diverse partners.
- Mapping and aligning existing efforts to understand the current resilience hub landscape, including site types, lead organizations, funding sources, and geographic focus areas.
- Identifying key challenges, opportunities, and priority needs through collaborative brainstorming and discussion to inform the group's direction.
- Developing a work plan and roadmap that outlines pathways from planning to development and implementation of resilience hubs, adaptable to different communities and partners.
- Exploring partnership and governance models to support long-term programming, operations, and financing of resilience hubs, including day-to-day management and community ownership.



Interested? contact Victorina Arvelo  
[varvelo@greenbelt.org](mailto:varvelo@greenbelt.org)