




Santa Clara County Climate Collaborative (SC4) Resilience Hub Work Group (RHWG)




County of Santa Clara Office of Sustainability



March 3rd 2026

PIVOT

community

excitement

ACTION

engagement

UNDERSTANDING

peace

FINALLY

OUT OF THE BOX

creativity

coordination

LOVE

evolution

TRUST

VILLAGE

connection

curiosity

identity

comfort

VICTORIOUS

synergy

ROOTS

Agenda



- Welcome + Introductions
- Round Robin Updates
- Meeting Goals
- Local Needs Assessment Report
- Asset Mapping Activity
- Wrap-Up + What's Next

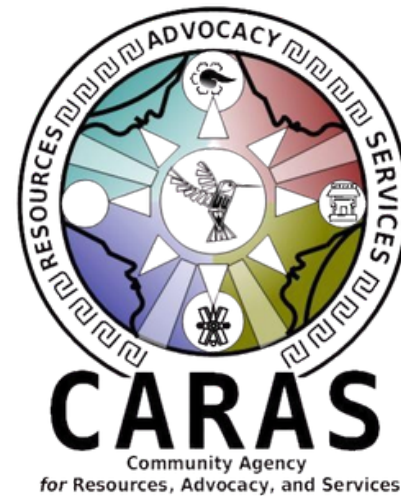
Introductions



Santa Clara County
Climate Collaborative



County of Santa Clara Office of Sustainability





Round Robin Updates



Meeting Goals



Santa Clara County

Climate Collaborative

- Share Local Needs Assessment as an example and tool
- Create a map to inform investment
 - Community assets, service providers
 - Identify gaps (geographic and demographic)
- Start a referral network
 - and maybe spark new partnerships!

Local Needs Assessment

In Gilroy

- $\frac{2}{3}$ have monolingual spanish speakers in their families
- Limited familiarity with climate change
- **1 in 5** reported climate related work disruptions
- $\frac{2}{3}$ lack emergency preparedness knowledge

Local Needs Assessment

Gilroy's Most Requested Resources Ranked

Cooling Centers: safe, free spaces for extreme heat.

Record Cleaning (or expungement) Clinics: assistance with paperwork and legal requirements to remove barriers to employment, housing, and education.

Know-Your-Rights Workshops: educational sessions designed to inform community members—often immigrants or targeted groups—about their legal rights and how to assert them when interacting with law enforcement or immigration officials.

Safe Space Resource Days: organized, scheduled, and supportive events designed to provide a secure environment for individuals to access resources, connect with peers, and receive support, particularly for mental health, trauma recovery, or specific community needs.

Life Skills and Wellness Workshops: classes to improve self-sufficiency, resilience, and mental well-being by covering topics such as financial management, communication, stress reduction, and healthy relationships.

Local Needs Assessment

In East San Jose

- $\frac{2}{3}$ of people don't know what climate change is, and only 20% know how climate change impacts their health
- Only 10% had an emergency plan
- More than half experience extreme heat inside their homes
- More than half reported difficulty covering basic expenses and accessing services

Local Needs Assessment

East San José's Most Requested Resources Ranked

Know-Your-Rights Workshops: educational sessions designed to inform community members—often immigrants or targeted groups—about their legal rights and how to assert them when interacting with law enforcement or immigration officials.

Life Skills and Wellness Workshops: classes to improve self-sufficiency, resilience, and mental well-being by covering topics such as financial management, communication, stress reduction, and healthy relationships.

Rent-relief and Eviction Prevention: free, educational session designed to help tenants understand their housing rights, navigate landlord disputes, and access financial aid.

Neighborhood Emergency Preparedness Days: provide training, resources, and action plans to reduce risks, encouraging neighbors to collaborate on safety, emergency kits, and evacuation planning.

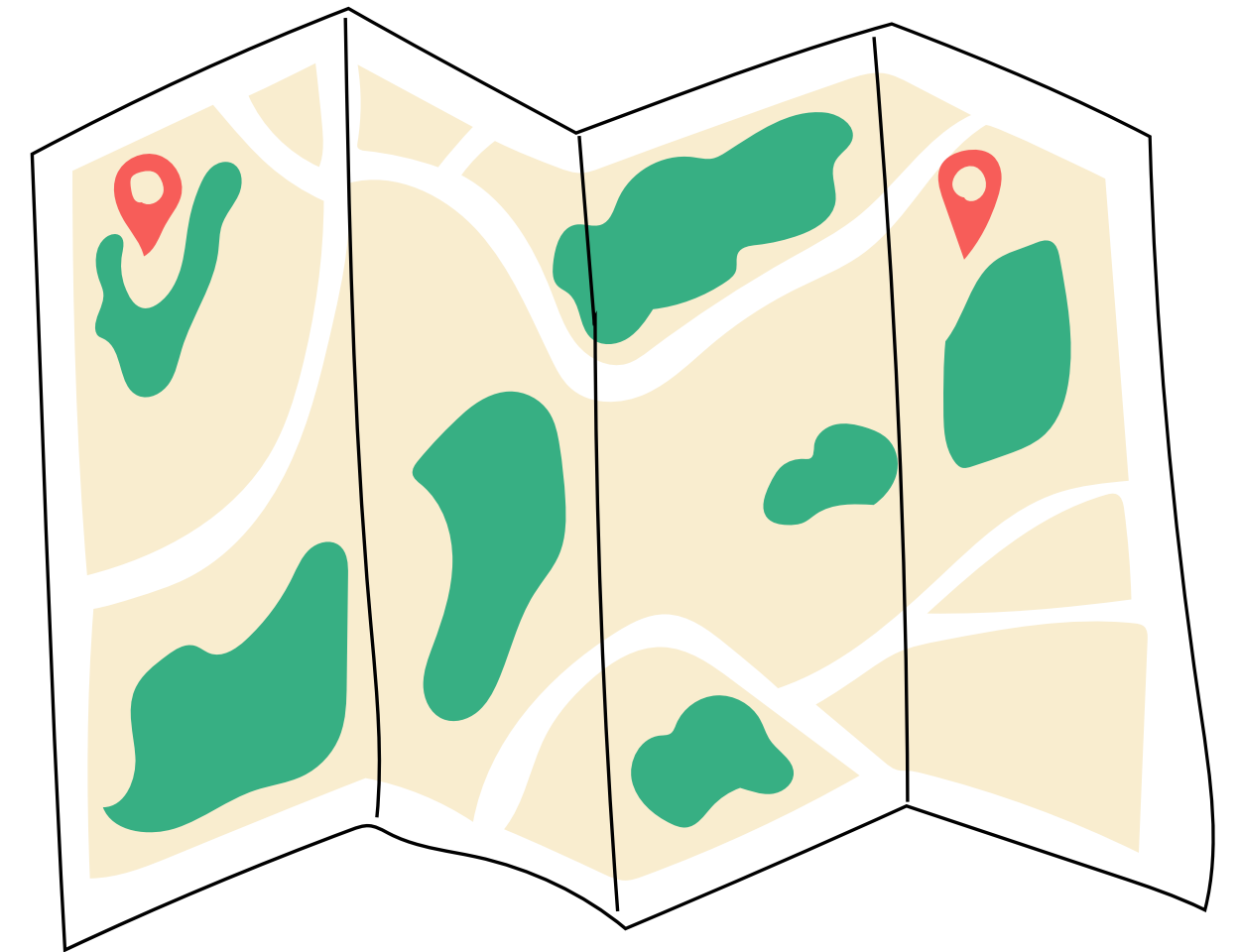
Referrals to Immigration Lawyers: connecting with free or low-cost legal assistance from a qualified, licensed attorney who specializes in immigration law

Building Our Resilience Landscape

An asset mapping activity

You are answering three questions:

- A. What resilience-supporting services exist in each neighborhood?
- B. Where are the gaps (by geography AND by population served)?
- C. Where are partnership opportunities clustered within 1–2 miles?



What Counts as a Resilience Asset?

- Food distribution & community kitchens
- Health & mental health services
- Emergency response, cooling, shelter
- Housing stabilization & rent support
- Workforce & job training
- Youth & family programs
- If the community relies on it, it belong on the map



Map what exists

(20 minutes)

1. Place a color-coded sticker on the map
2. Identify that asset on the worksheet
 - a. There is one for you (your organization's snapshot)
 - b. and another for other services and assets (community asset addition)
3. Include communication networks!

Green = Food access

Blue = Health services

Red = Emergency response

Orange = Housing stabilization / rent assistance

Purple = Workforce / job training

Yellow = Youth / family services



Map what exists

(20 minutes)

Mapping what is there

Community Asset Additions

Dot color and number: Green three

Asset name Nuestra señora del Pilar

Approximate location (cross streets) or address Main and 1st

Contact person (if known) Maria Ines

Seasonal (e.g. only summers) Permanent Pop-up

Does it operate during emergencies? (heat, wildfire smoke, power shutoffs, flooding)

Yes No

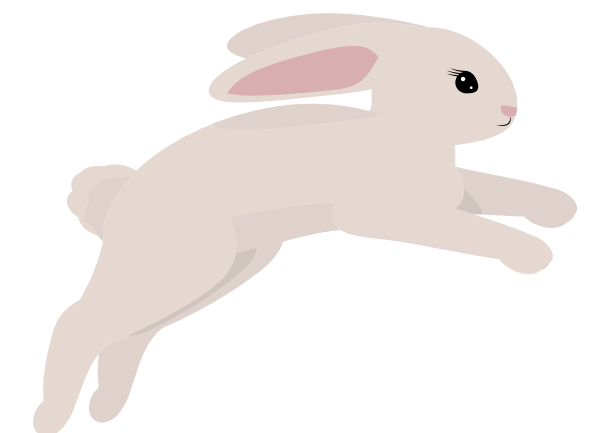
Identify Gaps

(15 minutes)

- Does this neighborhood have at least one of each service type?
- Are services concentrated in one area only?
- Which populations are not being served?
- Are there language gaps?

Circle areas with missing services

Elaborate on the worksheet



Partnership Scan

(10 minutes)

- Which organizations are within 1–2 miles of each other?
 - Who could collaborate tomorrow?
 - What services can you direct your community members to?
 - Who could help you expand your capacity?
- Where could co-location strengthen services?



Report Out

(10 minutes)

- What would you add to your neighborhood?
- Biggest gap identified
 - Service missing
 - Populations not reached
- Possible partnerships: who can you lean on?



Reflection & Next Steps

- Compiling all this data into
 - A map
 - A directory
- Sharing Local Needs Assessment Report
- Full summer (tentatively)
 - Meeting 3 - Early June
 - Open House - Late July
 - Meeting 4 - Early September
- Or... we could combine a Meeting + Open House



COMMUNITY ASSET MAP

01

ADD YOUR ASSET TO THE MAP

Place a color coded sticker on the map at the approximate location of the service or asset you are identifying

02

USE THE WORKSHEETS TO ADD DETAILS

- Use **Your Organization's Snapshot** for your own facility
- Use the **Community Asset Addition** worksheet for facilities or services you know of

03

SHARE COMMUNICATIONS NETWORKS

Use a sticky note to add communication infrastructure.
This can be a whatsapp or facebook group, a neighborhood group... anything that helps keep people in the loop

Green = Food access

Food pantry, food distribution, food recovery, meals for seniors, soup kitchen, etc.

Blue = Health services

Primary care, mental health, vaccines, family planning, etc.

Red = Emergency response

Cooling centers, clean air space, shelters, etc.

Orange = Housing stabilization

rent assistance, tenants rights, home supportive services

Purple = Workforce / job training

Resume help, workforce development, workshops, trainings, help applying for jobs, etc.

Yellow = Youth / family services

Childcare, youth mentorship programs, afterschool programs, extracurricular activities, etc.